

ELECTRIC GRIDDLE WITH RIBBED PLATE TOP VERSION

Project:
Rev.:
Zone:
Location:



Code
CR1013969

Model
Q70FT/E410

Serie
QUEEN 7

GENERAL FEATURES

- 15/10 worktop thickness
- Stainless steel, Scotch-Brite finish
- Sturdy and powerful with compact design
- Depth of 700 mm means it will fit the most common configurations
- Catalogue offers more than 300 standard models
- Worktop, base cabinet, base cabinet with doors and oven versions
- Twin-piece knobs prevent the infiltration of dirt and are watertight
- Gas ranges having burners with various configurations and power ratings: 3,5 kW - 5,7 kW e 7 kW
- Wide range of accessories

The front bar is a new design feature that increases the kitchen's visual importance and offers clear benefits: it is a comfortable place for the chef to lean on; it means you will remain at a safe distance from the worktop and therefore protects from accidentally knocking against both items lying on the worktop and the knobs.

The knobs offer optimum grip and help the chef to have the setting controls right under his eyes. Special attention has also been paid to the knob bezel that has been expertly designed to avoid penetration of liquids and/or dirt. Thanks to the IPX5 water jet ingress protection rating, awarded after passing specific tests, knobs and knob bezels can be washed at the end of the working day without affecting performance or safety.



TECHNICAL DETAILS

ELECTRIC GRIDDLE WITH RIBBED PLATE TOP VERSION_x000D_

- Lowered griddle compared to the 4 cm top and tilted towards the machine front by 1 cm to drain the fat._x000D_
- Wide drawer for fat collection._x000D_
- Available with soft iron griddle or polished chrome griddle._x000D_
- Stainless steel high power armoured heating elements._x000D_
- Thermostatic safety control adjustable from 110°C to 280°C for all versions._x000D_

ELECTRIC GRIDDLE WITH RIBBED PLATE TOP VERSION

Code
CR1013969

Model
Q70FT/E410

Serie
QUEEN 7

Technical Information

Specifications	Data
Code	CR1013969
Description	Q70FT/E410 FTE RIGATO M40 TOP
CODICE COMMERCIALE	Q70FT/E410
Commercial line	QUEEN7
Supply	ELETTRICA
Depth	400 MM
Width	700 MM
Height	250 MM
Net weight	67,2399999
Net volume	0,428 M3
Packaging Depth	800 MM
Packaging Width	440 MM
Packaging Height	400 MM
Packaging Volume (m ³)	0,141
Gross weight (kg)	63,600
Electrical connection	380-415V 3N
Frequency	50-60 Hz
Electric Power	5,4 KW
Gas power (G25/25 mbar)	17,1999999 KW
IPX protection	IPX4
Certified model	Q70FT/E410

**ELECTRIC GRIDDLE WITH RIBBED PLATE
TOP VERSION**

Code
CR1013969

Model
Q70FT/E410

Serie
QUEEN 7

QUEEN

**PRODUCT'S
RANGE PLUS**



The plates tilt 10 mm towards the front of the appliance, optimising flow of fat into the drip drawer.



Plate welded to hob, thus guaranteeing a wider cooking zone and preventing the accumulation of dirt.



Equipment certified for low voltage directive 2014/35 / EU according to the international CB scheme.

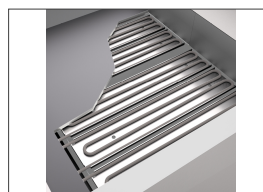
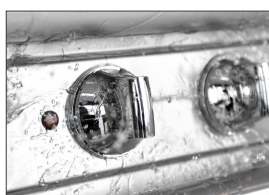
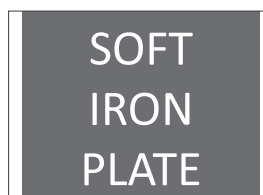


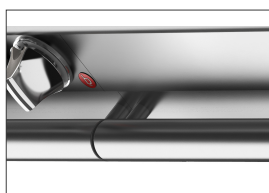
Plate with incoloy-sheathed heating elements placed on the underside in order to cook with a uniform temperature.



Thanks to the water jet ingress protection rating, awarded after passing specific tests, knobs and knob bezels can be washed at the end of the working day without affecting performance or safety.



Soft iron (extra-EU markets) griddle.



The front bar is a comfortable place for the chef to lean on; it means you will remain at a safe distance from the worktop and therefore protects from accidentally knocking against both items lying on the worktop and the knobs.

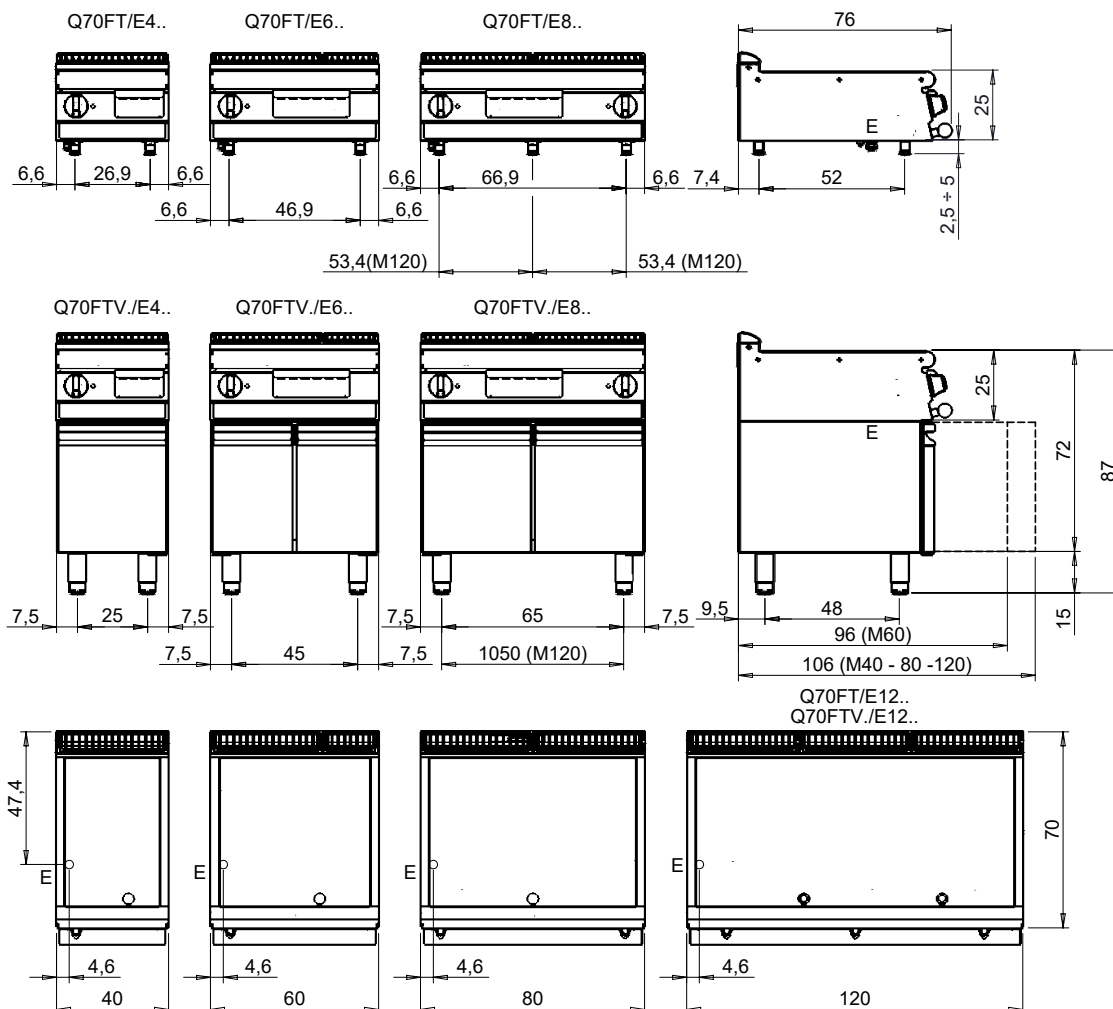
ELECTRIC GRIDDLE WITH RIBBED PLATE TOP VERSION

Code
CR1013969

Model
Q70FT/E410

Serie
QUEEN 7

MISURE IN cm - DIMENSIONS IN cm - ABMESSUNGEN IN cm - MESURES EN cm
MEDIDAS EN cm - MATEN IN cm - DIMENSIONES EN cm



Legenda - Legende - Key - Légende - Leyenda - Legenda - Legenda

E Pressacavo entrata linea elettrica - Stopfbuchse - Electric cable stress relief - Presse étoupe de câble él - Pisacable - Elektrische kabelwartel - Entrada cabo eléctrico	G Arrivo gas - Gasanschluss - Gas connection - Arrivée gaz - Union de gas - Gasaansluiting - Ligação gás
S Attacco scarico acqua - Wasserablauf - Water outlet - Vidange de l'eau - Desaguadero - Wateraftapaansluiting - Junção descarga água	H20 Arrivo acqua - Wasseranschluss - Water inlet - Arrivée eau - Union de agua - Wateraansluiting - Junção alimentação água
S1 Scarico vasca - Wannenabflussrohr - Pan outlet - Vidange du bac - Descarga cuba - Water toevoer - Descarga da cuba	A1 = Calda - Heiss - Warm - Chaude - Caliente - Warm - Morno
S2 Valvola di depressione - Anti-depression valve - Unterdruck ventil - Soupape de dépression - Válvula de depresión - Onderdrukklep - Válvula de depressão	A2 = Fredda - Kalt - Cold - Froid - Fria - Koude - Frio
S3 Scarico acqua intercapedine - Wasserablauf Zwischenraum - Jacket water drain Evacuation eau double envelope - Descarga de agua intersticios - Afvoer water tussenruimte - Descarga de água na marmita com Sistema de aquecimento indirecto	L Rubinetto di livello - Level tap - Wasserhahn - Robinet de niveau - Grifo de nivel - Niveaakraan - Torneira de nível
S4 Scarico - Abflussrohr - Drain - Tuyau d'évacuation - Tubo de drenaje - Aftapbuis - Tubulação de dreno	